



# JOTUN

## GLASSFLAKE REINFORCED COATINGS

Ultimate long-life protection for  
the harshest, most aggressive conditions



# Glassflake reinforced coatings

Exceptional  
strength

Unrivalled  
impermeability

## WHAT ARE GLASSFLAKE REINFORCED COATINGS?



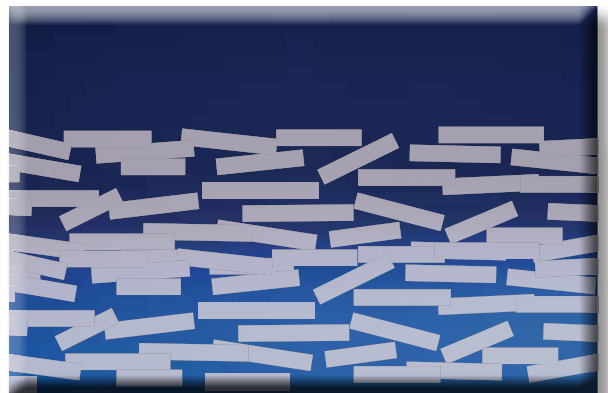
The basis of glass is silica (sand) and other minerals. Sand is inert, everlasting and stable.



These are melted together at very high temperatures to form glass.



Flakes of the glass provide a consistent barrier that is totally impervious to moisture, providing high levels of chemical resistance. The glassflake is inert in most environments and non-hazardous.



The flakes are incorporated into the coating where they overlap, stratify and reinforce.

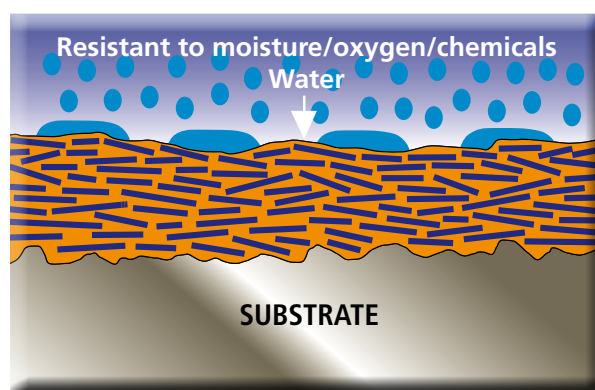
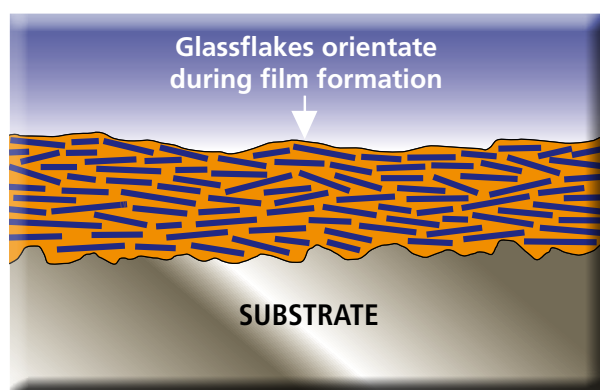


#### Network Rail case history

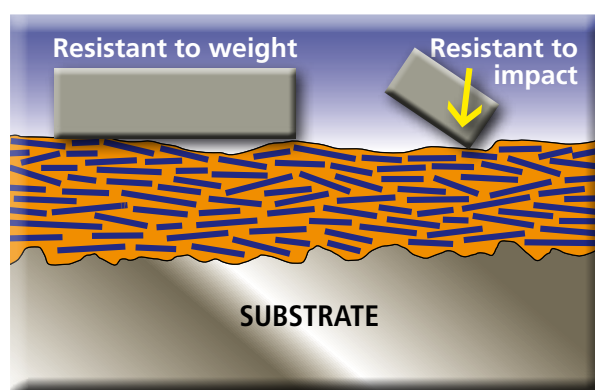
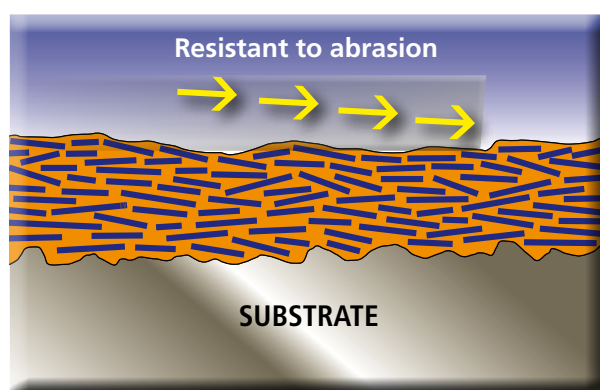
*"The use of Jotamastic 87 GF on existing structures has proved very successful, due to the design of some of our structures it is not always possible to grit blast all areas so having a system that lends itself to manual preparation and high pressure water jetting means we can apply the same product to all areas of the structure regardless of preparation methods, we have also found the product performs very well over prepared old existing coatings which is of a real benefit especially during short track possessions."*

Lee Wade, UK Network Rail

## A BARRIER TO CORROSION, IMPACT AND ABRASION



The glassflakes orientate as the film forms. The reinforcement of the glassflakes combines with the strength of specially formulated resins creating impermeable protection against abrasion and corrosion however hostile the environment.



The glassflakes add great strength to the coatings as the enhanced elongation and compression qualities provide superior resistance to the most severe abrasion and impact.

# Why glassflake?

Ultimate protection in the harshest environments

No exposure too extreme

No planned lifetime too long



**EXTREME EXPOSURE** – Protection against the heat of the desert, the cold of the night, the abrasion from sand and sand storms



**EXTREME EXPOSURE** – Proven in extreme conditions in the offshore sector, providing total protection for decades without maintenance



**EXTREME EXPOSURE** – Protection against high levels of impact, weight and abrasion that no traditional coating can provide



**TOUGH EXPOSURE** – Protection against attack from chemicals, acids, alkali, fresh and salt water – anything nature and industrial environments can provide



**TOUGH EXPOSURE** – Protection against exceptionally cold winters, abrasion from severe icing, the potential of high impact



**TOUGH EXPOSURE** – Protection of areas of high traffic against abrasion, the elements and heavy wear and tear

# What to expect

Protection for extended project lifetimes  
Minimum maintenance. Less downtime.  
Easy application. Prequalified documented standards

High expectations with Jotun's range of glassflake reinforced coatings are fulfilled.

## Long project lifetime expectations

Jotun glassflake reinforced coatings applied to offshore installations in the harshest environment of the North Sea have proven to provide protection for more than 30 years.

## Minimum maintenance

Lasting protection including areas inaccessible at maintenance.

## Easy to apply

Easier to apply, single coats up to 1500 microns, faster drying – lower downtime and application costs.

## Less downtime

Less downtime at new construction – costs resulting from commissioning delays are significantly less.

## Prequalification & documentation

Prequalified products, documented and approved to international standards. Coating advisors qualified, experienced and trained to global standards.

## Lifetime v Exposure

	LIFETIME			
	<15 years	15–25 years	25–40 years	>40 years
EXTREME EXPOSURE	Jotamastic 87 GF	Marathon Range	Baltoflake Range	
TOUGH EXPOSURE	Jotamastic 87 GF		Marathon Range	Baltoflake Range

### Experience on Ekofisk 1980 – 2006

ConocoPhillips

Baltoflake – proven for 20 to 30 years coating lifetime under cellar deck and on jackets

July 1980 Applied as deck screed 2./4T helideck

1982 Applied EkoA & AlbF helidecks

1986 First jacket coated offshore: 16/11S

1988 First jacket coated on land: EkoK

Post 1988 Applied to all jackets from land

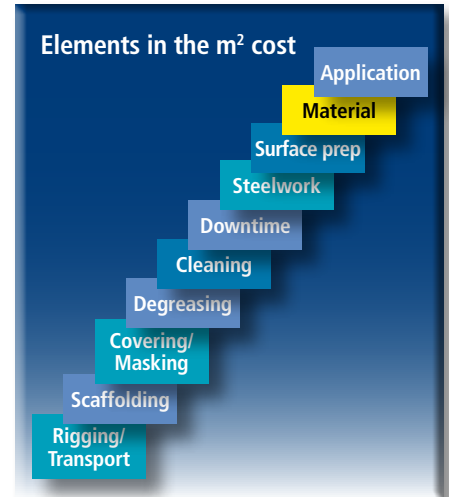
# Low Life Cycle Cost

## Achieve long term financial benefits

Investment in corrosion protection is about calculating the costs over the design life of the project – Life Cycle Cost analysis (LCC)  
– the investment in new construction today and maintenance in the future.

There are many different factors to be considered when choosing a protective paint system:

- The cost of maintenance is decided at the new construction stage.
- The cost per square metre at maintenance is higher than at new construction.
- Different coatings have different lifetimes.
- The longer the lifetime of a coating the greater potential for savings.
- It is false economy to calculate only the cost per square metre of the paint. It is essential to take all other costs into account – surface preparation, application costs, material costs and other costs – for the lifetime of the structure.



Based on information received of:

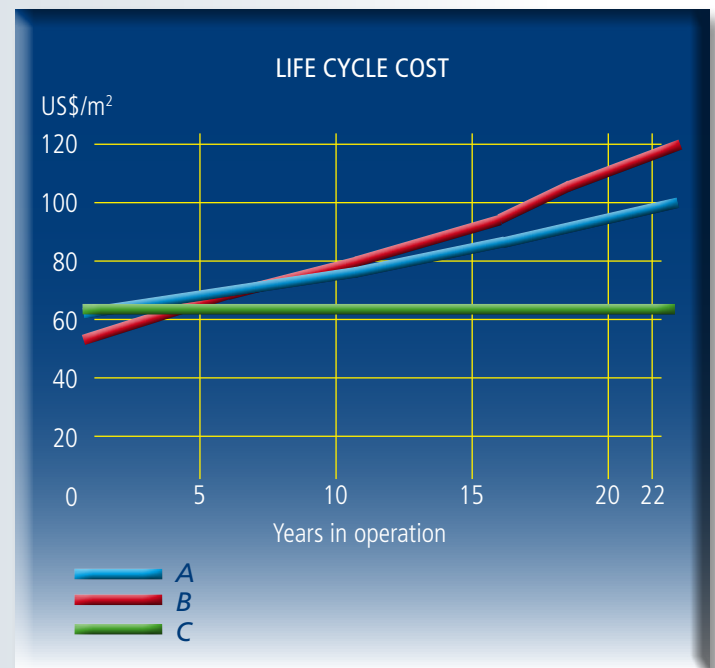
- breakdown development
- a bi-annual maintenance frequency
- and based on Norwegian costs

the results of the total cost evaluation are shown on the graph

**System B** initially is by far the cheapest but will exceed Systems A and C in cost after some 5 years. The cost differential continues to increase after that point.

**System C** is initially more expensive and involves very low maintenance requirement. Ultimately it will be the most cost effective system. Plus, the longer the life of the system, the greater the difference.

In an environmental Life Cycle Assessment, System C also shows the best results with the lowest rate of pollution from raw material, production and use/re-use stages.



### 25 year Life Cycle Cost (LCC) analysis:

Corrosion rate and cost levels in locations such as the North Sea and based on accumulated technical experience covering the lifetime of selected coating systems.

Glassflake Reinforced Coatings provide extended lifetime/lower LCC/up to 50% cost savings over 25 years LCC analysis.

# A wide choice of products

Individual benefits with each product  
Tailor-made solutions to meet different  
lifetime expectations and special usage areas

## BALTOFLAKE RANGE

POLYESTER COATING

### **Exceptionally long maintenance intervals**

The ultimate protection – paint and forget.

### **Walk on after just 3 hours**

With Baltoflake you can walk on the surface only three hours after application.

### **Fast drying, fewer coats**

Baltoflake's faster drying and fewer coats mean less downtime.

### **Spray up to 1500 microns in a single coat**

Baltoflake coatings can be sprayed in a single coat to give a dry film thickness up to 1500 microns on a vertical steel surface without sagging.

### **Solvent free**

Baltoflake solvent free coatings create immense strength and protection against water, chemicals, solvents, abrasion or mechanical attack, outperforming traditional protection such as metallizing and epoxy coatings.

## MARATHON RANGE

EPOXY COATING

High solids, two-pack coatings developed for long lifetime exposure, anti-corrosive and anti-abrasion protection. Long track record of success on offshore structures including splash zones, underdeck, decks and above water areas and on pilings and bridges. Marathon is also a non-skid coating when used with appropriate aggregate.

### **User friendly**

Standard 65:1 airless spray simplifies application (low temperatures: twin feed or heated equipment may be required).

### **Excellent substrate wetting and adhesion**

Substrate wetting is directly related to the coating's ability to adhere to the substrate. Good adhesion reduces risk of undercutting and coating damage.

### **Extreme abrasion and impact resistance**

Minimises damage to the coating when the structure is in operation.

## JOTAMASTIC 87 GF

EPOXY MASTIC COATING

### **All corrosive environments**

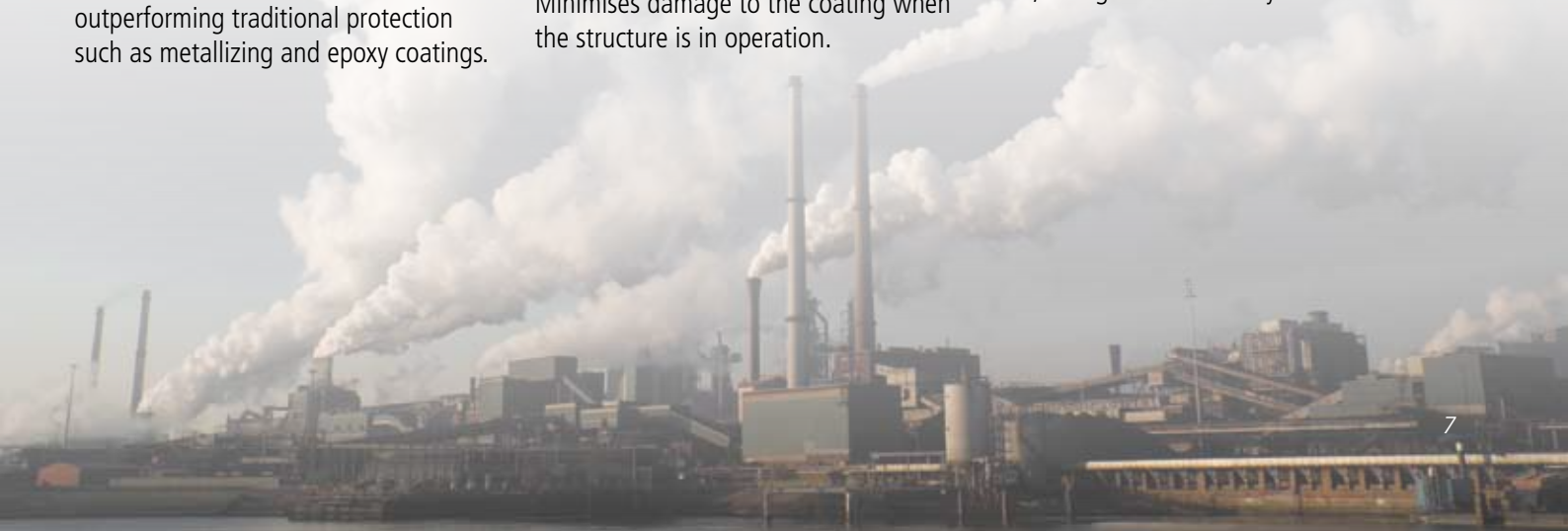
Industry, Marine, Offshore – protects steel in all environments – cold, heat, wind, rain, sand, salt and chemical laden – whatever nature or man can provide.

### **High surface tolerance**

Jotamastic 87 GF is simply the best. Compared to other modified epoxies it penetrates deeper into the substrate. Adhesion is superior and it is moisture tolerant. Can be applied faster and more easily on less well prepared surfaces delivering real savings.

### **Low surface preparation**

Applied on any sound substrate – Jotamastic 87 GF excels when applied on clean and sound surfaces prepared to minimum St 2. When surface preparation standard is low, this reduces preparation time, down time and cost. Where surfaces are prepared by water jetting, Jotamastic 87 GF can even be applied on early flash rust, saving time and money.



# The Baltoflake range

Quick curing, high build, abrasion resistant glassflake reinforced polyester coating

## BALTOFLAKE

- The original Baltoflake
- DFT range: 600 – 1500 microns
- Typical system:  
2 x 600 – 750 microns  
Can be applied 1 x 1500 microns
- More than 20 years' practical experience in splash zone protection in the North Sea

## BALTOFLAKE S2000

- Smooth, durable surface
- DFT range: 500 – 1000 microns
- Typical system:  
1 – 2 coats x 750 microns  
Can be applied 1 x 1000 microns
- Dry to recoat: 2 hours

### Burj Khalifa Dubai U.A.E.

Internal steel structure of the tallest building in the world is protected with Baltoflake



### Typical example

A typical example of Baltoflake's combination of speed, high levels of protection and minimum disruption:

Grit blasted during the night.

**0500 hrs** Netting on, helicopter landed.

**0700 hrs** Netting off, blast cleaning to Sa 2½ continues to completion.

**1245 hrs** Painting commenced.

Weather sunny/cloudy, 14°C.

Steel temperature 17°C.

Mixture 2 vol % catalyst.

1 coat 600 microns Baltoflake.

Volume of paint used 160 litres.

**1330 hrs** First coat completed.

**1415 hrs** Commenced application of second coat. Carborex 20 grit sprinkled on 600 microns coat. Volume of paint used 160 litres.

**1500 hrs** Operation completed.

**1630 hrs** Surface dry to walk on. Netting on.

**1800 hrs** Helicopter landed.

### What a customer has to say:

"Our main conclusions concerning Glassflake Polyester systems are:

- 20 – 30 years coating lifetime under cellar deck and on jackets
- Very few problems in tanks and vessels"

Andrew Greig

ConocoPhillips Norway

Norwegian Corrosion Federation 18.04.2006



# The Marathon range

High solids, two-pack epoxy coating reinforced with glassflakes

## MARATHON

- NORSOK pre-qualified
- High build: 200 – 400 µm
- Tested by STATOIL in pressure vessels:  
2 coats x 200 µm

## MARATHON XHB

- High film thickness, up to 1000 µm with standard airless spray equipment
- Low VOCs
- Solventless coating with 96% volume solids

Kola Bridge across Kola Bay in Murmansk, Russia.

The 2500m long by 22m wide bridge has four lanes and two sidewalks. The total length of the bridge metal spans is 1,470m with a painted area of 178,920 sq.m of metal requiring 250,215 litres of paint and thinners to be used.

2 coats of 250 microns Marathon were used for the underwater surfaces.



# Jotamastic 87 GF

Two-pack surface tolerant, glassflake reinforced, abrasion resistant, high solids epoxy mastic coating

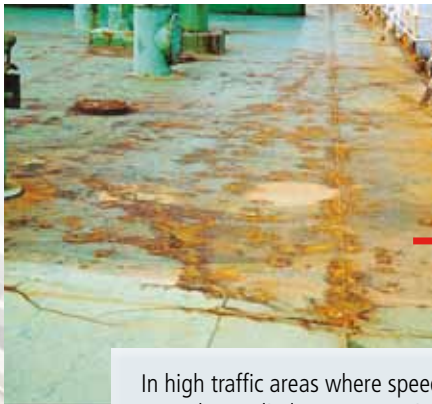
## APPLICATION

- 80% volume solids – less environmental impact – safer
- Surface tolerant
- Apply by brush and roller
- Apply from -5°C to 40°C with 2 different curing agents
- Very good adhesion, compatible with all substrates in typical maintenance situations
- Blast clean, spot hand and power tool preparation

## PERFORMANCE

- Provides all the time and cost saving benefits of Jotamastic 87 plus the hard-wearing resistance of glassflakes
- Long term protection
- For both new construction and in/out-of service maintenance

*Nanhai 2 semi-submersible rig drydocked at Youlian Shipyard in China and was protected with Jotamastic 87 GF and a topcoat of Hardtop AS.*



In high traffic areas where speed of maintenance is usually essential, Jotamastic 87 GF provides the solution. It can be applied up to 350 microns in a single coat directly to St 2 prepared surfaces, saving time when it counts

### **Steel walkways**

*Typical areas of high traffic, subject to heavy wear and tear. Jotamastic 87 GF, the ideal solution for protection.*

Product	Baltoflake	Baltoflake S2000	Marathon	Marathon XHB	Jotamastic 87 GF
Generic type	Polyester, GF	Polyester, GF	Epoxy, GF	Epoxy, GF	Epoxy mastic, GF
Solids level	Solvent less	Solvent less	High solid	Solvent less	High solid
DFT range (microns)	600–1,500	500–1,000	200–400	400–1,000	Std. 200–350 WG. 200–300
Min. curing temperature (°C)	10	10	10	10	-5
Dry to recoat @ 23°C	2h	2h	12h	10h	Std. 10h WG 5h
Min. surface treatment	Sa 2½	Sa 2½	Sa 2	Sa 2	St 2



#### ◀ Pampa Melchorita

Owner: PERU LNG – a consortium led by Hunt Oil (USA) which also includes partners Repsol YPF (Spain), SK Energy (South Korea) and Marubeni (Japan).

Type: Gas Export Pier and Jetty Project

Expected life time 30 years. Pier is 1.3 km long, 550 x 30m long pile (14,000 TM steel).

Baltoflake used on piers and approx. half of the 6,000 TM steel platform structure.

Paint system:

Pier piles: 2–4 coats Baltoflake, 750–1000 microns each to a total of 2750 microns

Pier platform: 1 coat Baltoflake, 750 microns

#### Development Driller 2 ▶

Owner: Transocean

Type: Semi-sub Rig 185

Built at: Jurong Shipyard Limited, Singapore

Year: March 2002

Paint system:

Main deck of pper hull:

1 coat Barrier 40 µm

1 coat Jotamastic 87 GF (Red) 200 µm

1 coat Jotamastic 87 GF (Grey) 200 µm



#### ▲ The Cargo Launch Barge

Owner: National Petroleum Construction Company

Deployed for offshore operation in Abu Dhabi

Built at Cochin Shipyard in India.

Paint system:

Marathon on decks and hull



# Jotun worldwide

Jotun Coatings and Jotun Paints  
Divisions of Jotun A/S

Legal Jotun entities world wide are listed.  
For details of Branch offices and Jotun  
representation in countries not listed,  
please visit **www.jotun.com**

## AUSTRALIA

Jotun Australia Pty. Ltd.,  
P.O. Box 105, Altona North,  
9 Cawley Road,  
BROOKLYN, VIC 3025  
Tel: +61 3 9314 0722  
Fax: +61 3 9314 0423

## BRAZIL

Jotun Brasil Ltda.  
Av Santa Luzia, 2084 - Santa Luzia  
24.722-315 São Gonçalo  
RIO DE JANEIRO  
Tel: +55 21 2776 1313  
Fax: +55 21 2776 2263

## P.R. of CHINA

Jotun Coatings (Zhangjiagang) Co. Ltd.  
Jotun COSCO Marine Coatings (Qingdao) Co. Ltd.  
Floor 20, Jiu Shi Mansions,  
No. 28 Zhong Shan Road (South)  
SHANGHAI 200010  
Tel: +86 21 6333 080 0  
Fax: +86 21 6326 968 6

Jotun Coatings (Zhangjiagang) Co. Ltd.  
Jotun COSCO Marine Coatings (Qingdao) Co. Ltd.  
Room 709-12, Goldlion Digital Network  
Centre, 138 Tiyu Road East,  
GUANGZHOU, 510620  
Tel: +86 20 38 78 07 49  
Fax: +86 20 38 78 19 66

HONG KONG  
Jotun COSCO Marine Coatings (H.K.) Ltd  
Room 1208, 12/F, Stanhope House  
734 King's Road, Quarry Bay  
HONG KONG  
Tel: +852 2527 6466  
Fax: +852 2861 1307

## DENMARK

Jotun Danmark A/S Jotun Coatings  
Columbusvej 5, 2860 Søborg,  
COPENHAGEN  
Tel: +45 4492 9400  
Fax: +45 4492 9401

## EGYPT

El Mohandes Jotun S.A.E.  
El Sheikh Aly Gad El Haq Street  
Florida Mall, Masaken Sheraton – 4th Floor  
CAIRO  
Tel: +20 2265 1800  
Fax: +20 2265 1801

## FINLAND

Nor-Maali OY  
Vanhatie 20, 15240 LAHTI  
Tel: +358 3 874 650  
Fax: +358 3 874 6550

## FRANCE

Jotun France S.A.  
22/24 Rue du President Wilson, Bat.A  
92300 LEVALLOIS PERRET  
Tel: +33 1 4519 3882  
Fax: +33 1 4519 3894

## GERMANY

Jotun (Deutschland) GmbH  
Haferweg 38  
22769 HAMBURG  
Tel: +49 40 851 960  
Fax: +49 40 856 234

## GREAT BRITAIN

Jotun Paints (Europe) Ltd.  
Stather Road, Flixborough,  
SCUNTHORPE DN15 8RR  
Tel: +44 1724 400 000  
Fax: +44 1724 400 100

## GREECE

Jotun Hellas Ltd.  
18, Vouliagmenis Avenue, Glyfada  
ATHENS 16675  
Tel: +30 210 42 85 980-82  
+30 210 42 86 035-37  
Fax: +30 210 42 85 983/+30 210 42 87 237

## INDIA

Jotun India Pvt Ltd.  
204 & 205 Ascot Centre,  
Sahar Road, Andheri (East)  
MUMBAI 400 099  
Tel: +91 22 2822 4600  
+91 22 2820 5900 (+fax)  
Fax: +91 22 2820 5900

## INDONESIA

P.T. Jotun Indonesia Paints and Chemicals  
Kawasan Industri MM2100  
Blok KK-1, Cikarang Barat  
Bekasi 17520  
Tel: +62 21 8998 2657  
Fax: +62 21 8998 2658

## IRELAND

Jotun (Ireland) Ltd.,  
Unit K7, Marina Commercial Park,  
Centre Park Road, CORK  
Tel: +353 214 965955  
Fax: +353 214 965992

## ITALY

Jotun Italia S.P.A.  
Via Petronio, 8, Zona Ind. Noghere  
34147 - MUGGIA (TRIESTE)  
Tel: +39 040 23 98204  
Fax: +39 040 23 98222

## KOREA (SOUTH)

Chokwang-Jotun Ltd.  
30th Block Jisa Science Park,  
1205 Jisa-dong, Gangseo-gu,  
BUSAN 618-230  
Tel: +82 517 976 000  
Fax: +82 517 117 735

## LIBYA

Jotun Libya J.S.Co  
Al Mumtaz Imp. of Paints and Equipm. Co.  
P.O. Box 6850  
Hail Al Andalous district  
TRIPOLI  
Tel: +218 214777811  
Fax: +218 214780718

## MALAYSIA

Jotun (Malaysia) Sdn. Bhd.  
Lot 7 Persiaran Perusahaan,  
Section 23, P.O. Box 7050  
40700 SHAH ALAM  
Tel: +60 351 235 500  
Fax: +60 351 235 632

## THE NETHERLANDS

Jotun B.V.  
Postbus 208  
3200 AE SPIJKENISSE  
Visiting address:  
Curieweg 11b, 3208 KJ Spijkenisse  
ROTTERDAM  
Tel: +31 181 678 300  
Fax: +31 181 617 899

## NORWAY

Jotun A/S  
P.O. Box 2021,  
3248 SANDEFJORD  
Visiting address:  
Hystadveien 167, 3209 Sandefjord  
Tel: +47 33 45 70 00  
Fax: +47 33 45 79 00

## OMAN

Jotun Paints Co. LLC  
Rusayl Ind. Estate, Road No.10  
P.O. Box 672 Code 111, MUSCAT  
Tel: +968 2444 6100  
Fax: +968 2444 6105

## PAKISTAN

Jotun Pakistan (Pvt.) Limited  
Plot no. 2-H, Sector 5  
Korangi Industrial Area, KARACHI  
Tel: +92 213 5121 491-2  
Fax: +92 213 5121 493

## POLAND

Jotun Polska Sp. z o.o.  
Ul. 10 Lutego 16, 81-364 GDYNIA  
Tel: +48 58 555 1515  
Fax: +48 58 781 9692

## RUSSIA

Jotun Paints O.O.O.  
Stachek Avenue 57, No.31  
198096 ST. PETERSBURG  
Tel: +7 81 2332 0080 / 2785 0034  
Fax: +7 81 2783 0525

## SAUDI ARABIA

Jotun Saudia Co. Ltd.  
Jeddah Industrial City, Phase 3,  
P.O. Box 34698, JEDDAH 21478  
Tel: +966 2635 0535 / 2636 1271  
Fax: +966 2636 2483

## SINGAPORE

Jotun (Singapore) Pte. Ltd.  
11&15 Sixth Lok Yang Road,  
Jurong, SINGAPORE 628111  
Tel: +65 650 882 88  
Fax: +65 6265 7484

## SOUTH AFRICA

Jotun Paints South Africa (PTY) Ltd.  
Wimbledon Road, P.O.Box 187  
BLACKHEATH 7581  
Tel: +27 21 905 1070  
Fax: +27 21 905 1652

## SPAIN

Jotun Iberica S.A.  
Poligon Santa Rita,  
Calle Estatica no. 3,  
08755 Castellbisbal,  
BARCELONA  
Tel: +34 937 711 800  
Fax: +34 937 711 801

## SWEDEN

Jotun Sverige AB  
P.O. Box 151, Klangfärgsgatan 13,  
421 22 VÄSTRA FRÖLUNDA  
Tel: +46 3169 6300  
Fax: +46 3169 6397

## THAILAND

Jotun Thailand Ltd  
Amata Nakom Ind. Estate (BIPII)  
700/353 Moo 6 Tumbol  
Donhualoh, Amphur Muang  
CHONBURI 2000  
Tel: +66 38 214 824-6/214 347-51  
Fax: +66 38 214 373/375

## TURKEY

Jotun Boya San. ve Ticaret. A.S.  
Yeni Camlik Caddesi,  
Ayaz Sok. No. 2/4, 4. Levent,  
ISTANBUL 34418  
Tel: +90 21 2279 7878  
Fax: +90 21 2279 2549

## U. A. E.

Abu Dhabi  
Jotun Abu Dhabi (LLC)  
P.O. Box 3714, Mussafah  
ABU DHABI  
Tel: +971 2551 0300  
Fax: +971 2551 0232

## Dubai

Jotun U.A.E. Ltd. (LLC)  
P.O. Box 3671,  
Al Quoz Industrial Area  
DUBAI  
Tel: +971 4339 5000  
Fax: +971 4338 0666

## USA

Jotun Paints, Inc.  
9203 Highway 23, P.O. Box 159,  
Belle Chasse, LA 70037  
Tel: +1 800 229 3538 /  
+1 504 394 3538  
Fax: +1 504 394 3726

## VIETNAM

Jotun Paints (Vietnam) Co. Ltd.  
Song Than Industrial. Zone,  
No.1 Street 10,  
Di An District, Binh Duong Province  
Tel: +84 65 074 2206-9  
Fax: +84 65 074 2205

## YEMEN

Jotun Yemen Paints Co. Ltd  
P.O. Box 70183, Al Alam  
ADEN  
Tel: +967 2820 546-9  
Fax: +967 2249 362



## HEAD OFFICE

Jotun A/S  
P.O. Box 2021, 3248 Sandefjord,  
Norway  
Tel: +47 33 45 70 00  
Fax: +47 33 45 79 00  
www.jotun.com